

DIAL INDICATORS (STANDARD TYPE)

JEWELLED BEARING

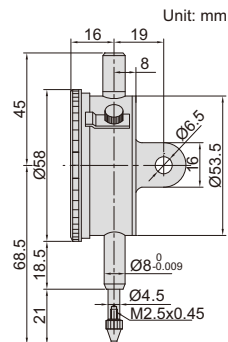
INSPECTION CERTIFICATE
TRACEABLE TO NIST

- Meet DIN878
- Jeweled bearing
- Supplied with limit pointers and bezel clamp
- Optional accessory: backs (page 167~168), contact points (page 164~166)



2308-10A

Code	Range	Graduation	Accuracy	Hysteresis	Range/rev	Dial reading	Remark
2308-3FA*	3mm	0.01mm	12 μ m	3 μ m	1mm	0-100	flat back
2308-5FA*	5mm	0.01mm	14 μ m	3 μ m	1mm	0-100	flat back
2308-10FA*	10mm	0.01mm	17 μ m	3 μ m	1mm	0-100	flat back
2308-3A*	3mm	0.01mm	12 μ m	3 μ m	1mm	0-100	lug back
2308-5A*	5mm	0.01mm	14 μ m	3 μ m	1mm	0-100	lug back
2308-10A*	10mm	0.01mm	17 μ m	3 μ m	1mm	0-100	lug back



*Supplied with manufacturer inspection certificate traceable to NIST USA